

## Inventario di componenti:

Due anelli Ø 63-68 × 3 mm

Due ruote

Sfera in acciaio o plastica Ø 14 mm

Due motori 28BYJ-48 5V

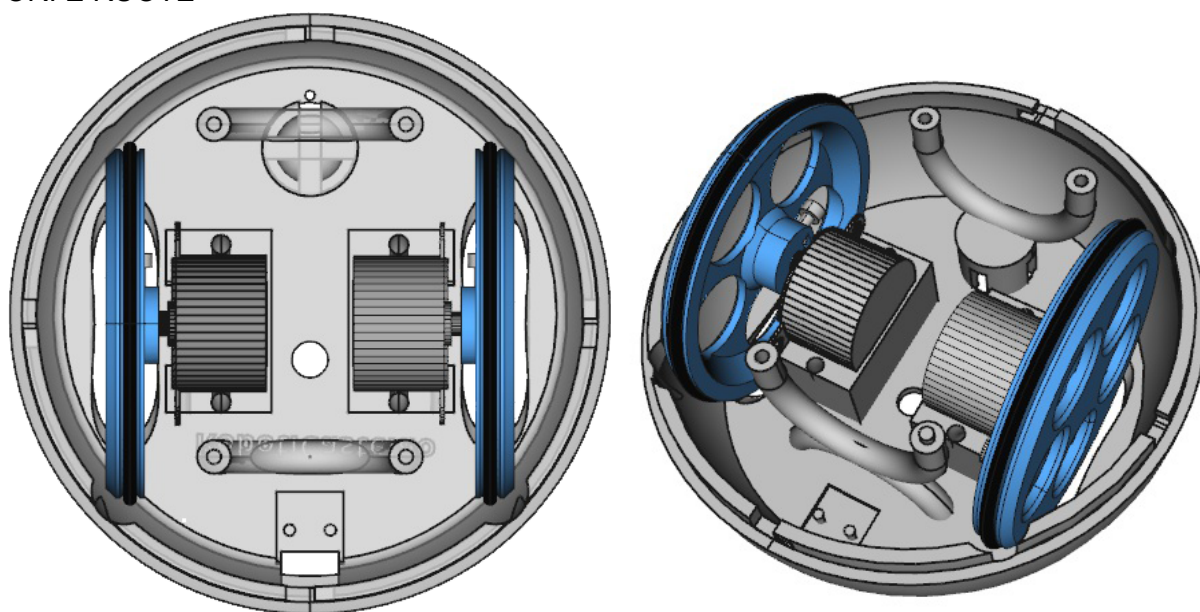
Batteria

Connettore micro-USB

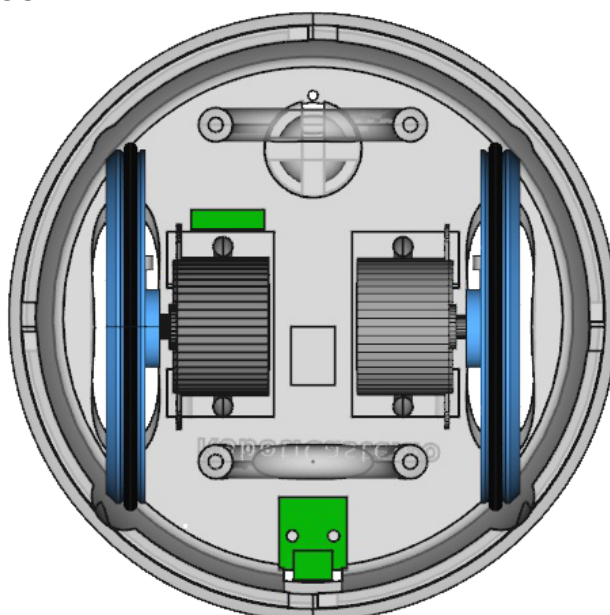
Circuito stampato (premontato)

## ASSEMBLAGGIO:

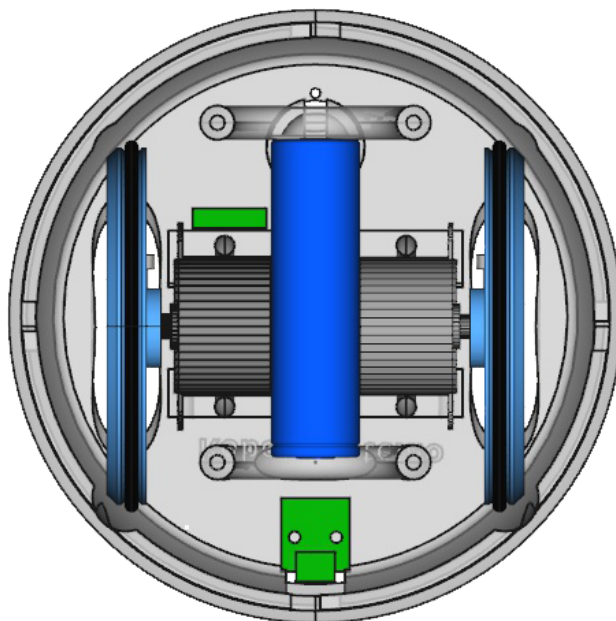
### 1.- MOTORI E RUOTE



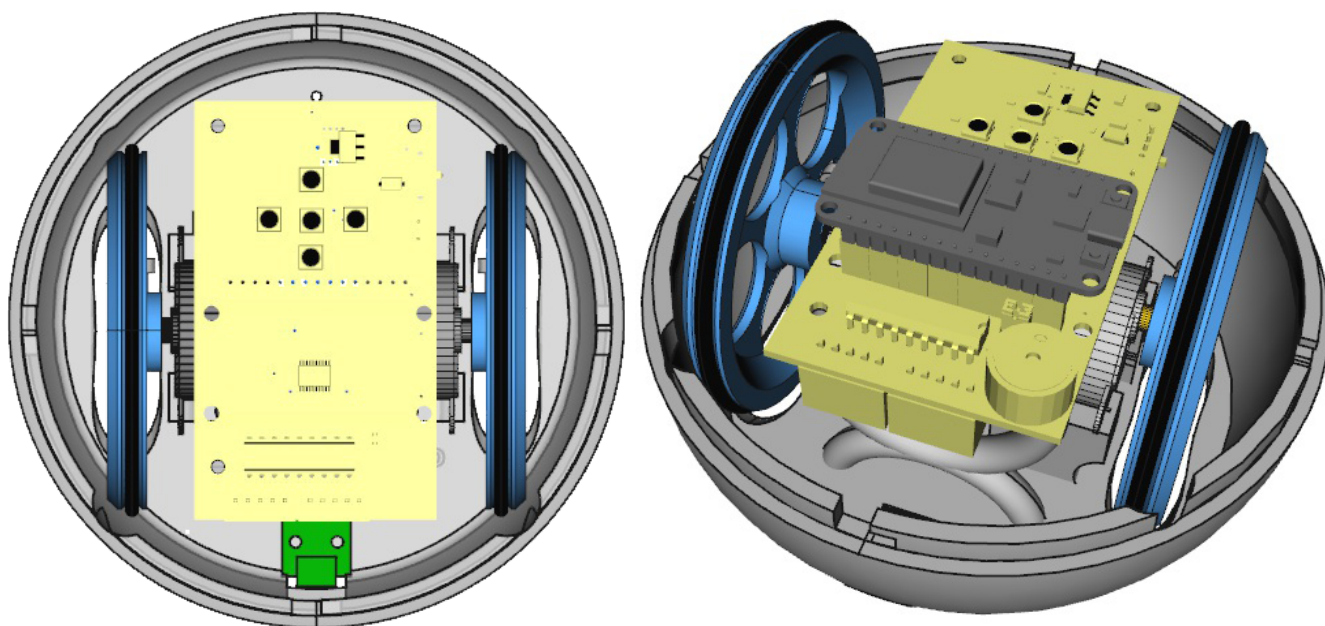
### 2.- COLLEGAMENTO MICRO-USB



### 3.- BATTERIA



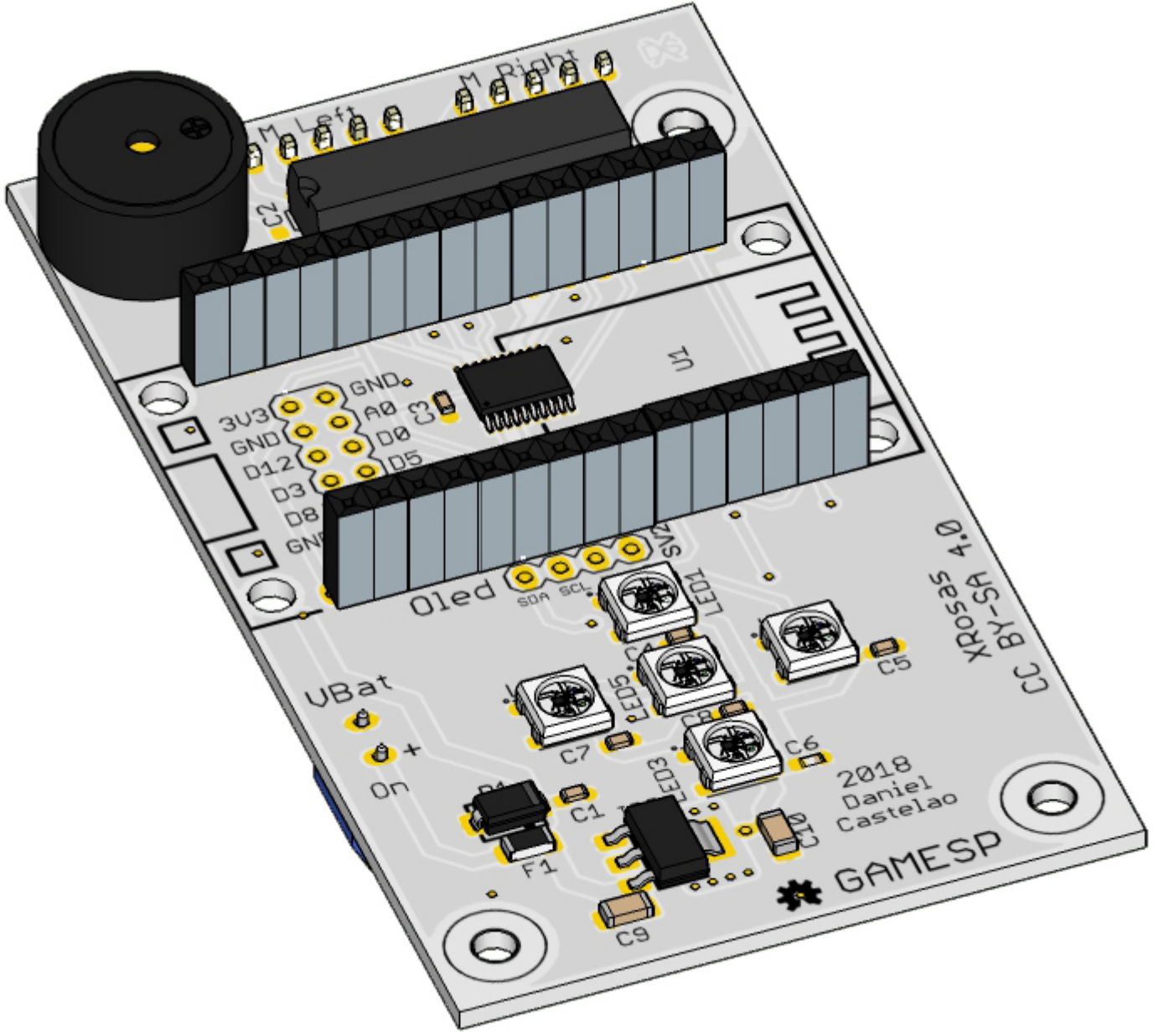
### 4.- SCHEDA A CIRCUITO STAMPATO

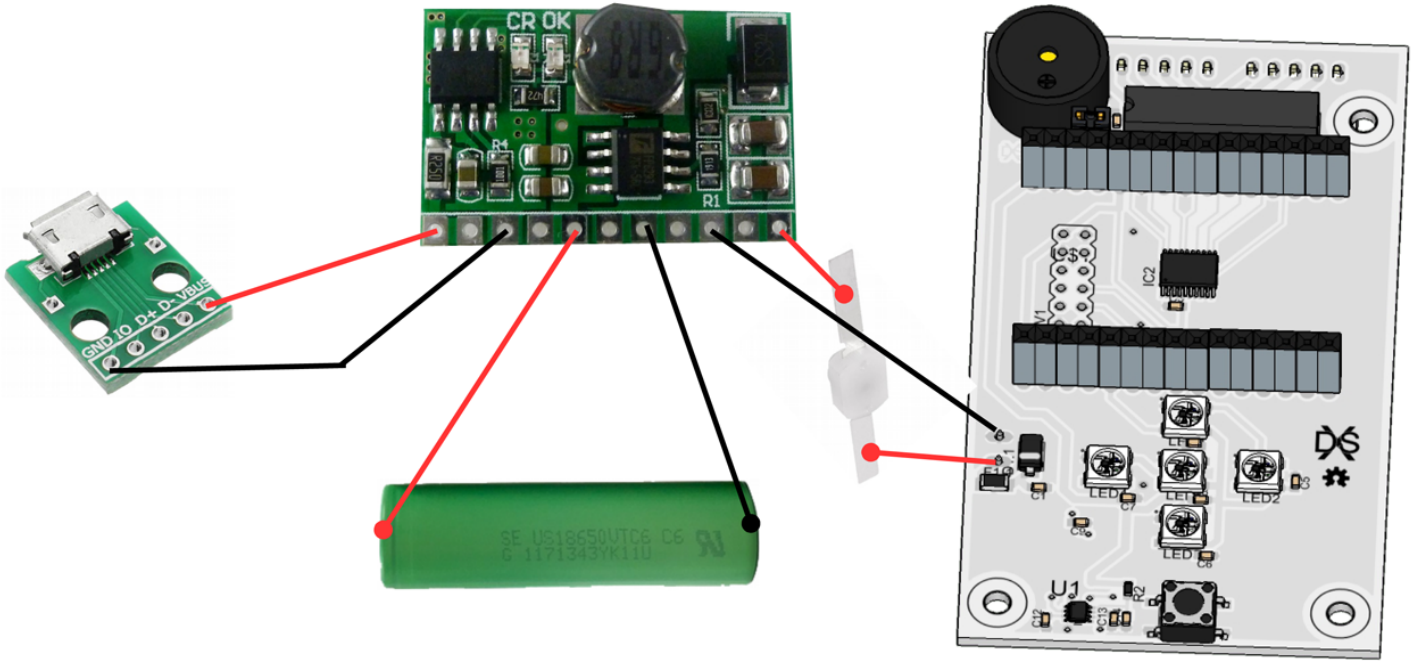


### 5.- CONTENITORE SUPERIORE ED INFERIORE

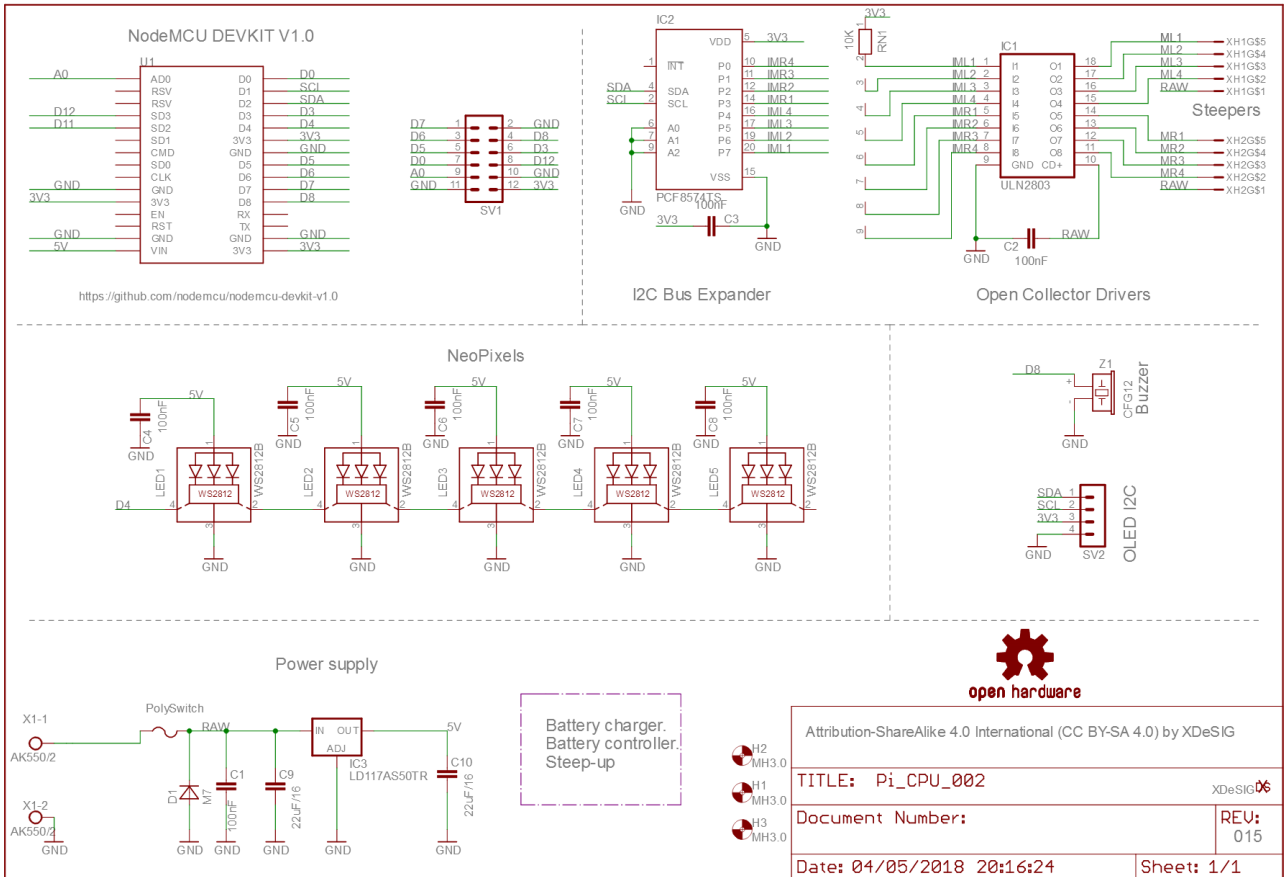


PCB V002





# Schematic



open hardware

Attribution-ShareAlike 4.0 International (CC BY-SA 4.0) by XDeSIG	
TITLE: Pi_CPU_002	XDeSIG06
Document Number:	REU: 015
Date: 04/05/2018 20:16:24	Sheet: 1/1